

## 1021 AUDIO SYSTEM



# 1021 AUDIO SYSTEM

## Operating instructions





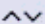



### Index

|  |         |
|--|---------|
| Controls .....                         | 2       |
| Display .....                          | 3       |
| Security coding .....                  | 4 - 6   |
| Glossary .....                         | 7       |
| Switching on - Audio adjustments ..... | 8       |
| Radio .....                            | 9 - 12  |
| Cassette player .....                  | 13 - 14 |

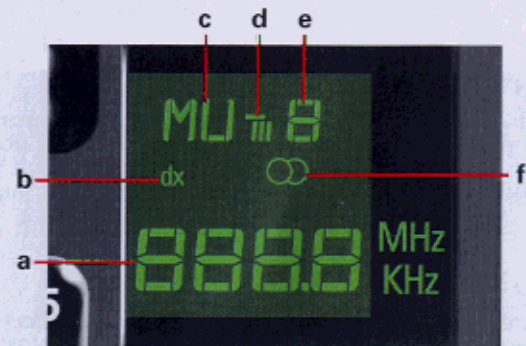
## OPERATING INSTRUCTIONS


When reading these instructions, refer to the fold-out section inside the front cover.

## DESCRIPTION OF THE CONTROLS

- (A)  ON/OFF - Volume control.  
 SCAN.
- (B) **TONE** BASS/TREBLE control.
- (C) **BAL** Balance: left/right.
- (S) 1 - 5 STORE buttons 1 - 5.
- (1a)  **ROCKER SWITCH** : manual tuning in both directions.
- (1b)  **ROCKER SWITCH** : automatic tuning in both directions.
- (2) **dx** **dx** mode button.
- (3) **UT** Brief press : Waveband selection; UI - UII - UIII - UT.  
Press and hold : "Travelstore" (stations memorised automatically on FM).
- (4) Cassette flap.
- (5) **ML** Waveband selector M(MW) / L(LW) selector.
- (6) **PS** Preset memory scanning.
- (7)  Fast forward/rewind.  
 Both buttons simultaneously: cassette eject.
- (8) Display.
- (9) Code protection indicator.

## DISPLAY



- (a) Frequency (radio).
- (b) **dx** Tuner sensitivity level.
- (c) Waveband: U = FM, L = LW, M = MW.
- (d) FM memory bank: I, II, III or T.
- (e) 1 - 5 - Preset buttons.
- (f)  - Stereo reception (radio only).

**ATTENTION: Do not press or rub the display panel.**

## SECURITY CODE

### THEFT DETERRENT...

- This radio/cassette player is protected by a four-figure **security code**. Your dealer will have provided you with the details of this code on delivery of the vehicle.
- The unit also possesses a unique identity number etched into its casing.

### OPERATION OF THE SECURITY CODE

The unit is of no interest to someone who does not know the code (2,000 combinations). Each incorrect code entry will cause the unit to lock for a certain period of time. Further attempts at code entry cannot be made until this period of time has expired.

- Make sure that the radio SECURITY CODE is given to you when taking delivery of the car.
- Keep the CODE in a safe place, with the vehicle documents perhaps but never in the car.

If the electrical supply is disconnected (for example if the unit is stolen), the unit will not operate until the **correct code** is entered.

## CODE ENTRY PROCEDURE



This operation must be carried out whenever the electrical supply is disconnected (for example if the unit or battery is disconnected).

- Switch on the unit using the on/off button (A), the display reads «Cod»
- Press one of the five preset buttons (S), the display reads «000».
- Enter the four-figure security code by pressing the preset buttons 1 to 4. Button 1 controls the first digit of the security code which will be either «1» or «0». Pressing preset button 1 repeatedly will switch between **1** and **blank** (representing «0» in the display).

The other preset buttons control the remaining three digits of the code.

Each press of the button increments the figure by 1: 1,2,3.....9.

On the tenth press of a button, the figure will be reset to 0 and the cycle may be repeated.

- Validate your code by pressing button (1a).

### Example: code 1349

| Action                                      | Display |
|---|---------|
| Press preset button 1 once                  | 1 0 0 0 |
| Press preset button 2 three times           | 1 3 0 0 |
| Press preset button 3 four times            | 1 3 4 0 |
| Press preset button 4 nine times            | 1 3 4 9 |
| Validate your code by pressing button (1a). |         |

### Example: code 0349

| Action                                      | Display |
|---|---------|
| Do not press preset button 1                | 0 0 0 0 |
| Press preset button 2 three times           | 3 0 0 0 |
| Press preset button 3 four times            | 3 4 0 0 |
| Press preset button 4 nine times            | 3 4 9 0 |
| Validate your code by pressing button (1a). |         |

### If an incorrect code has been entered:

The display reads « - - - ».



9

After each of the first two incorrect attempts, the unit will lock for ten seconds. Once the ten seconds have elapsed, the display will again read «Cod».

After the third incorrect attempt, the unit will be locked for one hour. Do **not** switch the unit off during the locked period.

If the code is lost, the unit can only be decoded by a CITROËN dealer on presentation of proof of ownership.

After the twentieth incorrect attempt, the unit will be permanently locked, the display will read « - - - ». In such a situation, you must consult a CITROËN dealer. (This is not covered by the guarantee).

### LOSS OF ELECTRICAL SUPPLY

Whenever the electrical supply is disconnected (for example if the unit or battery is disconnected), the display will read «Cod» and the security code will have to be re-entered.

### CODE PROTECTION INDICATOR

The unit is fitted with a CODE PROTECTED indicator lamp (9) which flashes when the ignition is off. It indicates that the unit is protected against theft. The lamp is not lit when the ignition is on.

### GLOSSARY

- SCAN** : automatic searching for a station. Stops for 5 seconds on each station received.
- PRESET SCAN** : automatic cycling of the preset stations. Stops for 5 seconds on each station received.
- BALANCE** : balances the volume level of the left and right speakers.
- UT** : FM frequencies.
- TRAVELSTORE** : Stores the five strongest FM stations in the UT memory bank.
- dx** : indicates that station searching will include transmitters with weak signals.

### FM Reception in the car

In-car FM reception can be compared to that of home equipment.

FM reception offers optimum sound reproduction.

However, good reception in a moving vehicle is always more difficult to achieve than with a fixed domestic aerial. When the vehicle is in motion, the signal strength will vary continuously (perhaps unnoticeably). Thanks to the design of the radio/cassette unit, optimum reproduction is obtained in spite of these changing conditions.

Make sure that the aerial mast is positioned correctly (at an angle of 45° approximately).

## ON/OFF: AUDIO ADJUSTMENTS



### ON/OFF

- Turn the button **(A)** to switch the unit on and off.

### VOLUME

- Turn the button **(A)** to adjust the volume.

### BASS/TREBLE

- Turn button **(B)** : to the adjust the bass/treble levels.

### BALANCE

- Turn button **(C)** : to the right to increase the volume from the right speaker.  
to the left to increase the volume from the left speaker .

## RADIO RECEPTION



### SELECT THE DESIRED WAVEBAND

- **UT (FM)**  
Select the desired waveband by pressing button **(3)** to cycle through the FM memory banks (U1,U11,U111,UT).
- **MW/LW**  
Select the desired waveband by pressing button **(5)** to switch between Long and Medium wavebands.

### SELECTING A STATION

Several possibilities:

- **Manual searching**  
Press button **(1a)** to search in the desired direction until the required station is found.
- **Automatic searching**  
Press button **(1b)** to search in the desired direction and then release, searching will stop at the next station received.  
Keeping button **(1b)** depressed provides rapid search only stopping when the button is released.  
During automatic searching, if the frequency displayed is already memorised, the corresponding preset reference will flash several times on the display.

## RADIO (cont'd)



### • The SCAN function

Press button **(A)**.

Automatic search begins, the programme of each station received is played for approximately 5 seconds and then searching continues. On reaching the desired station, press button **(A)** again. The radio will remain tuned to the station.

### • SEARCH TUNING SENSITIVITY

Press the **dx** button **(2)**.

This function is active during AUTOMATIC SEARCH, SCAN, PRESET SCAN («PS») and TRAVELSTORE («UT») operations.

In areas where reception is poor, press the **dx** button **(2)** when «dx» will appear in the display.

The radio will tune to all received stations.  
When «dx» is selected, sound will be produced in MONO only.

In urban areas where many stations are broadcasting, you can select the best signal by cancelling the **dx** function. The «dx» will disappear from the display.

To modify the automatic search to suit the reception conditions, press and hold the «dx» button **(2)** for eight seconds.

- «L» is displayed indicating entry into **LOCAL** and «dx» mode, activated in areas served by a large number of stations transmitting strongly on FM frequencies.
- «H» is displayed, indicating entry into **LOCAL** and «dx» mode, activated in areas where FM reception is poor.

## RADIO (cont'd)



## STORING A STATION

### • Manually

Select a station in the desired waveband - **L, M, UI, UII, UIII**. Press and hold the preset button **(S)** of your choice for several seconds.

The sound will be muted for several seconds. When the sound returns, the station will be memorised and the preset number will be displayed.

### • TRAVEL STORE

The **TRAVEL STORE** function allows you to store automatically five local FM stations.

Press the **(UT)** button **(3)** for approximately three seconds. Five received FM stations will be memorised and stored automatically. They can be recalled by selecting **UT** and pressing the appropriate preset button **(S)**.

In addition to the stored stations, the radio will also memorise the last station tuned.

If you wish to store a station whose signal is out of range but whose frequency is known, proceed as follows:

- Select the desired waveband or memory bank.
- Using the manual tuning facility, tune to the required frequency.
- Memorise the station by pressing and holding the desired preset button.

When searching manually, tuning is done in:

- 50 kHz steps for FM frequencies eg 92.00-92.01-92.10 etc. (the second digit after the decimal point is not displayed)
- 9 kHz steps for **MEDIUM** wave
- 1 kHz steps for **LONG** wave

## Radio (cont'd)



### Recalling a preset station

#### – With the preset buttons (S)

Briefly press the desired preset button (S) (1 to 5) to listen to a memorised station of the waveband concerned.

(See **Storing a station**)

#### – With the Preset Scan - PS button (6)

Press the **PS** button briefly. The unit cycles through the memorised stations (See **storing a station**) in the selected waveband, playing each programme for approximately 5 seconds. To stop the **SCAN**, press the **PS** button (6) again.

## CASSETTE PLAYER



### CASSETTE PLAYING

- Switch on the radio/ cassette unit using button (A).

Insert the cassette with the playing side uppermost and the empty spool toward the front.

When a cassette is inserted, the radio operation halts and tape playback starts immediately.

At the end of the tape, the unit will revert automatically to radio operation.

**FAST FORWARD/REWIND:** press one of the buttons **◀ (7) ▶** to fast forward or rewind tape. Stop the action by light pressure on the opposite button.

**CASSETTE EJECT:** press both buttons **↶ (7) ↷** simultaneously to eject the cassette.

**The radio flap must be opened before switching off the unit or turning off the ignition.**

### ATTENTION

Uncontrolled switching of the unit to radio operation could indicate an unevenly wound or sticking tape. Check the tape spooling and rewind several times to spool the tape evenly.



### Care of the cassette player and cassettes.

Take appropriate care of the cassette player and the cassettes.

Use only good quality C60 or C90 cassette tapes to ensure a long-life of the mechanism and good tape spooling. Metal, ferrous oxide and chromium dioxide tapes may be used.

Eject the cassette when not in use to protect both mechanism and tape.

Keep your cassettes clean and store them in their protective case.

Temperatures exceeding 50 C or direct sunlight will damage the tape. In freezing conditions, allow the tape to warm up before attempting to play it. Uneven tape spooling may occur if the tape is not of the correct temperature.

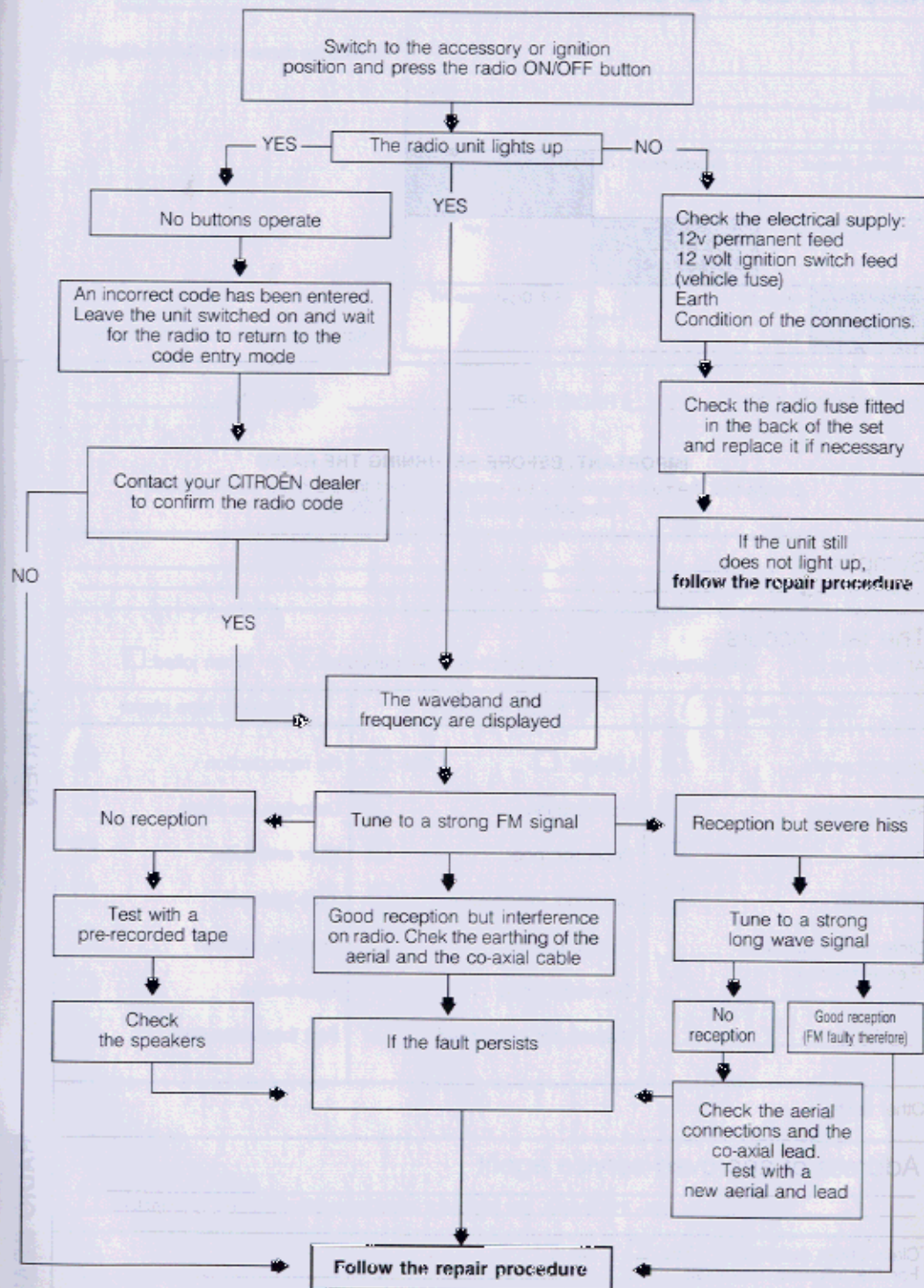
Depending on tape quality, reproduction quality and tape spooling could be affected by a build-up of dust from the tape (after approximately 100 hours of use). Clean the tape roller and the magnetic head with a cotton bud dipped in alcohol. Do not use a metallic object.

After extensive use, the cassette mechanism should be cleaned and inspected by a specialist. This maintenance work is not covered by the guarantee.

### IF REPAIRS ARE NEEDED

If the radio/cassette player requires attention, contact a CITROËN dealer.

## FAULT FINDING



# RADIO DEFECT REPORT

Stamp of CITROËN dealer

M. \_\_\_\_\_  
 Address \_\_\_\_\_  
 \_\_\_\_\_ Tel. \_\_\_\_\_

|                      |                 |                      |
|----------------------|-----------------|----------------------|
| Comm. Symbol         | Registration N° |                      |
| Guarantee start date | Guar. Type      | Chassis N°           |
| RP ORG N°            | Dealer N°       | R.P. Organisation N° |
|                      | Town            |                      |

Include the name of the Service Manager

Note: the non-shaded boxes must be filled in.

RADIO SECURITY CODE [ ] [ ] [ ] [ ] RADIO TYPE \_\_\_\_\_ SERIAL N° \_\_\_\_\_

### IMPORTANT, BEFORE RETURNING THE RADIO

Ensure that the radio code you are using is correct for the radio set in question  
 If necessary check with CITROËN UK

Symptoms \_\_\_\_\_

The fault occurs  
 All the time:  Intermittently:  As a function of temperature:  When jolted:

| Controls, fascia  | Radio reception  | Cassette tape player                           |
|---|--|--|
| Volume control <input type="checkbox"/>                           | LW/MW <input type="checkbox"/> FM <input type="checkbox"/> | No reproduction <input type="checkbox"/>       |
| Radio pre-sets <input type="checkbox"/>                           | No reception <input type="checkbox"/>                      | Distortion, no treble <input type="checkbox"/> |
| Display <input type="checkbox"/>                                  | Reception poor <input type="checkbox"/>                    | Wow and flutter <input type="checkbox"/>       |
| Illumination <input type="checkbox"/>                             | Distortion, interference <input type="checkbox"/>          | Tape jammed <input type="checkbox"/>           |
| Other control functions (Please specify) <input type="checkbox"/> | Tuning, search <input type="checkbox"/>                    | Insertion, ejection <input type="checkbox"/>   |
|   | One station only <input type="checkbox"/>                  | Autoreverse <input type="checkbox"/>           |
|   | Stations not memorised <input type="checkbox"/>            | Fast forward/rewind <input type="checkbox"/>   |

Other faults: \_\_\_\_\_

Address of approved service agent  
 \_\_\_\_\_  
 \_\_\_\_\_

Claim under guarantee: Yes  No   
 For the following reason(s): \_\_\_\_\_

Date of receipt: \_\_\_\_\_ Date of return: \_\_\_\_\_

CITROËN

RADIO DEALER